



Optical Inspection  Hard & Software

# PIPEX

## SOLUTIONS

# SDLD-1 DATA SHEET

A P P L I C A T I O N  
C H A R A C T E R I S T I C S  
D I M E N S I O N S

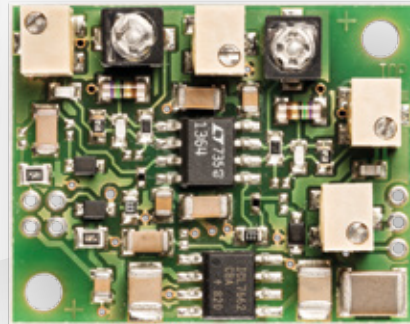
# SDLD-1

---

## RANGE OF APPLICATION:

Video amplifier for use as a line driver on the camera side or for restoring the video signal at the end of the cable for any camera system.

---



---

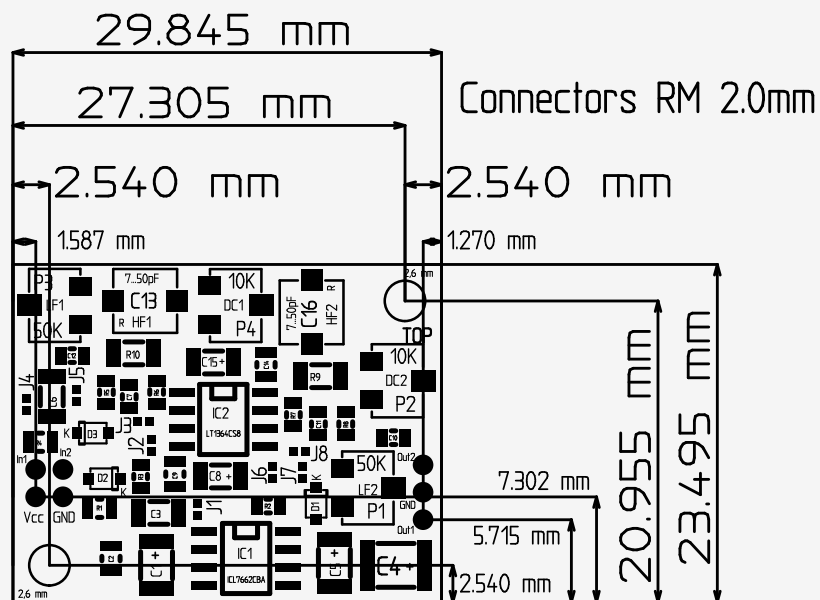
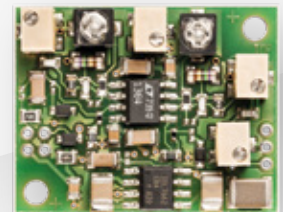
## SDLD-1

- 2-channel video line driver
- gain adjustable
- frequency response adjustable
- supply voltage 7-12V

# SDLD-1

## DIMENSIONAL DRAWING

30,2 x 23,7 x 10,1 mm



Measure (5.51 09/27/105 vclld01.tc)